



MKR #245 to MKR #253 -- 23 JAN 25
 MKR #253 to MKR #258 -- 09 AUG 23
 MKR #258 to MKR #270 -- 04 JUN 24
 MKR #270 to MKR #282 -- 03 SEP 24

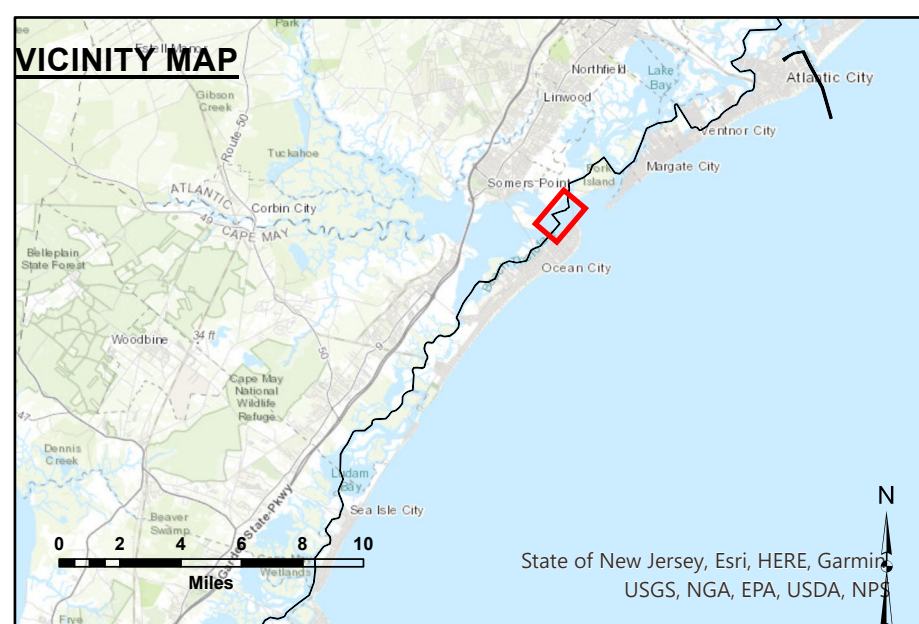
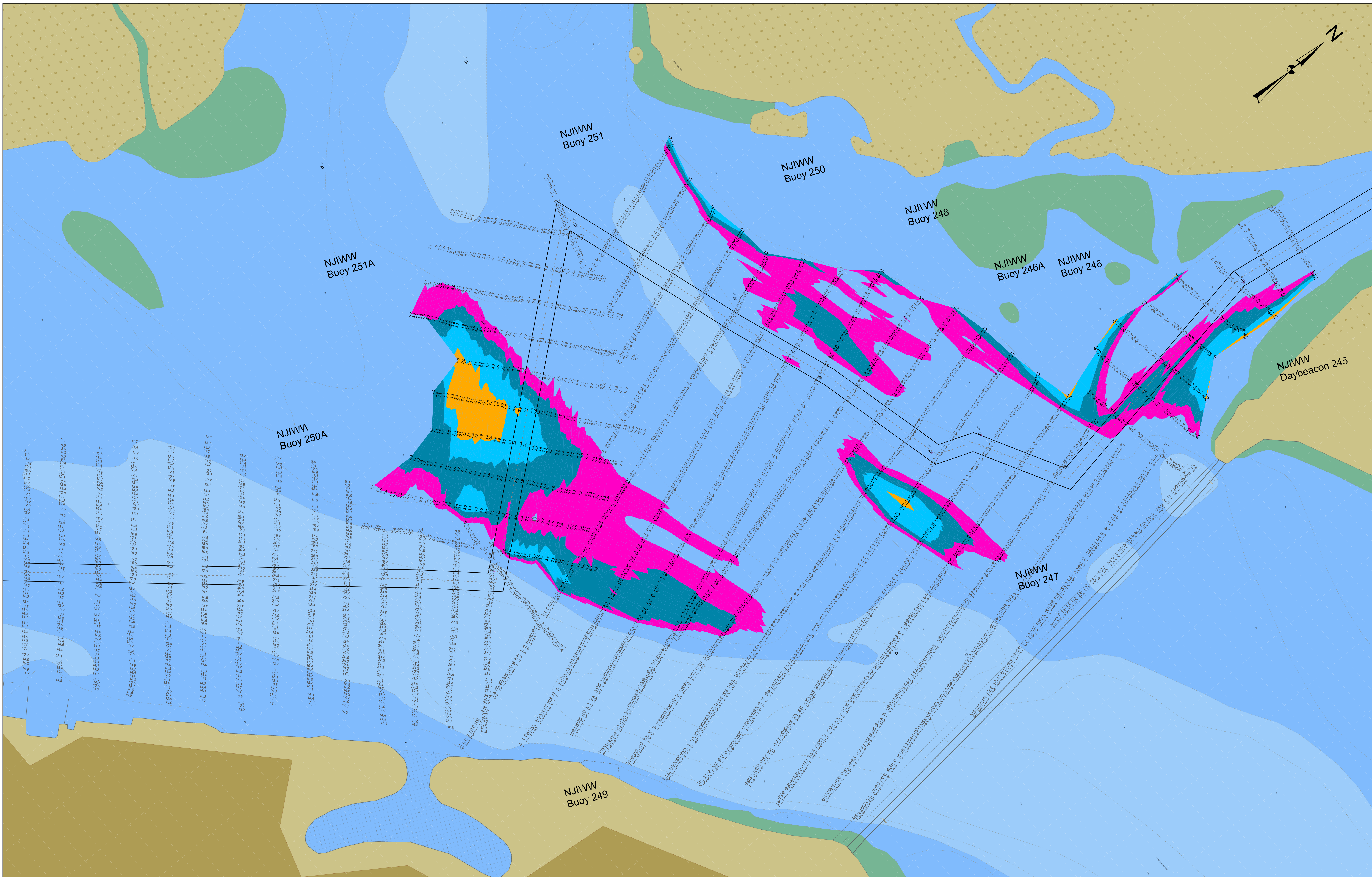
DISCLAIMER

The information contained in this advertisement is not intended for use in a litigation out of USA and is not intended for publication. The author and publisher of the article disclaim all liability for any errors or omissions in the information published. The author and publisher of the article disclaim all liability for any errors or omissions in the information published. The author and publisher of the article disclaim all liability for any errors or omissions in the information published.

<p>Drawing No. _____</p> <p>U.S. ARMY CORPS OF ENGINEERS PHILADELPHIA DISTRICT</p>	<p>Surveyed By: _____</p> <p>Plotted By: _____</p> <p>E. Anthony</p> <p>Checked By: _____</p>
<p>Not Scaled:</p> <p>Approved: _____</p> <p>Chief Survey Section</p>	

**NEW JERSEY INTRACOASTAL WATERWAY
IW 12 - MKR #245 to MKR #282
EXAMINATION**

IW-44



THIS SURVEY MEETS STANDARDS AS OUTLINED IN CORPS OF ENGINEERS' HYDROGRAPHIC SURVEY MANUAL EM1110P-2-1003, DATED NOVEMBER 30, 2013 FOR NAVIGATION AND DREDGING SUPPORT SURVEYS.

HORIZONTAL REFERENCE - NAD 83, NEW JERSEY STATE PLANE, ZONE 2900, U.S. FOOT.

VERTICAL REFERENCE - MEAN LOWER LOW WATER, WHICH IS 2.27' BELOW N.A.V.D. 88.

GEOD 18 AND NOAA TIDAL EPOCH: 1983 - 2001 WERE USED. SOUNDINGS ARE EXPRESSED IN FEET AND TENTHS AND REFER TO MEAN LOWER LOW WATER.

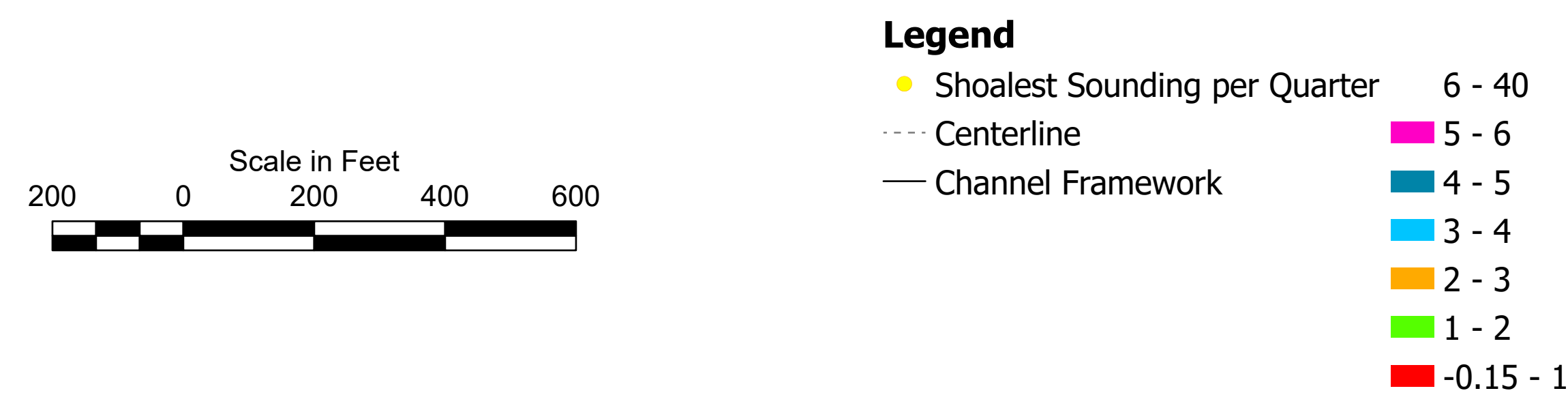
THE INFORMATION DEPICTED ON THIS MAP REPRESENT THE RESULTS OF SURVEYS MADE ON THE DATES INDICATED AND CAN ONLY BE CONSIDERED AS INDICATING THE GENERAL CONDITIONS EXISTING AT THAT TIME.

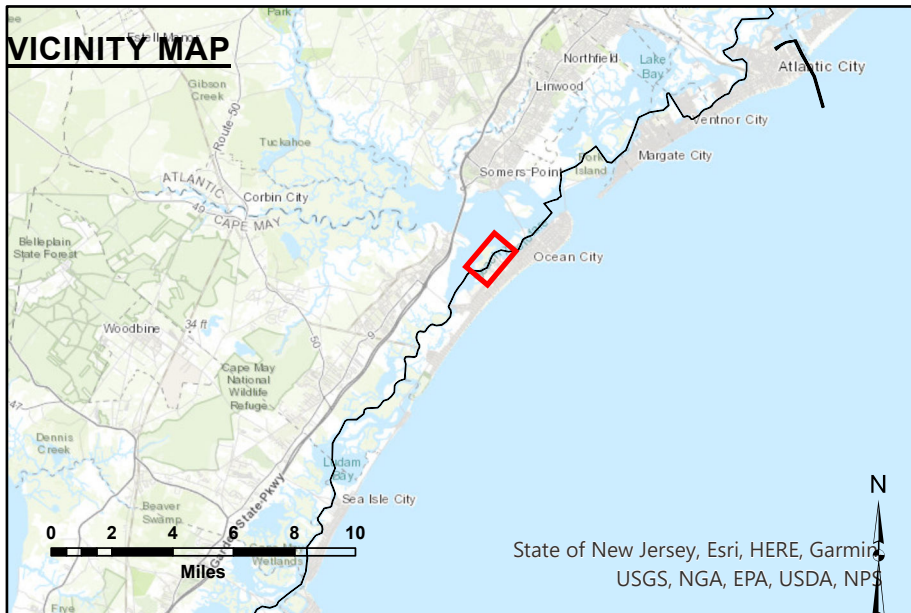
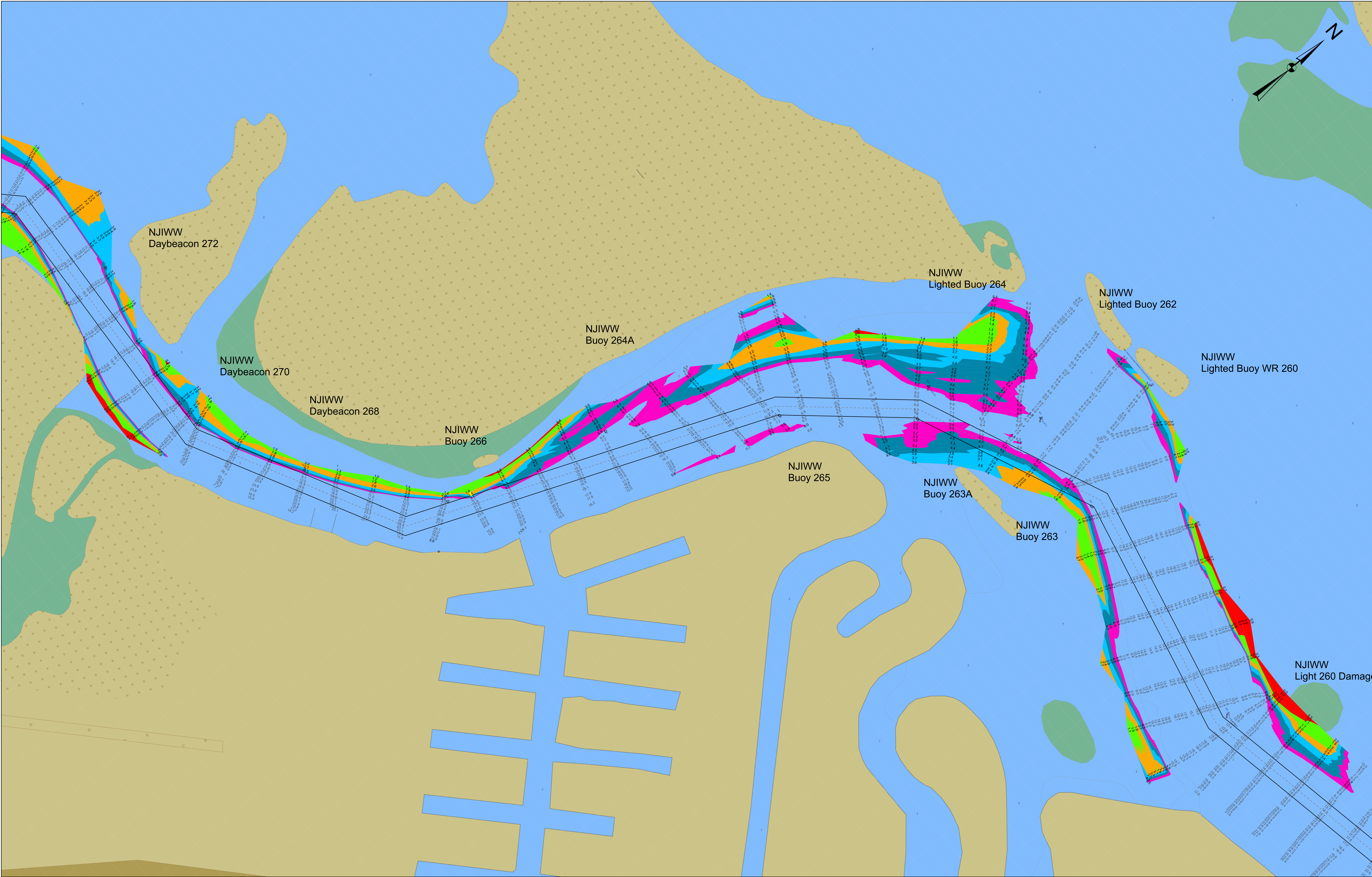
THE POSITIONS OF THE AIDS TO NAVIGATION ARE PROVIDED FOR INFORMATION ONLY, AND SHOULD NOT BE USED FOR NAVIGATION.

THE LIMITS OF THE FEDERAL CHANNEL DEPICT THE MOST CURRENT CHANNEL FRAMEWORK AVAILABLE WHICH CAN ALSO BE DOWNLOADED HERE:

<http://navigation.usace.army.mil/Survey/Framework>

BASE MAPPING LINEWORK OR ORTHOPHOTOGRAPHY HAS BEEN COMPILED FROM A VARIETY OF SOURCES AND DATES AND IS INTENDED TO PORTRAY GENERAL CHARACTERISTICS OF THE SHORELINE AND OTHER FEATURES. TEMPORAL CHANGES MAY HAVE OCCURRED SINCE THIS DATA SET WAS COLLECTED AND SOME PARTS OF THE DATA MAY NO LONGER BE AN ACCURATE REPRESENTATION OF THE SURFACE CONDITIONS.





THIS SURVEY MEETS STANDARDS AS OUTLINED IN CORPS OF ENGINEERS' HYDROGRAPHIC SURVEY MANUAL EM1110-2-1003, DATED NOVEMBER 30, 2013 FOR NAVIGATION AND DREDGING SUPPORT SURVEYS.

HORIZONTAL REFERENCE - NAD 83, NEW JERSEY STATE PLANE, ZONE 2900, U.S. FOOT.

VERTICAL REFERENCE - MEAN LOWER LOW WATER, WHICH IS 2.27' BELOW N.A.V.D. 88.

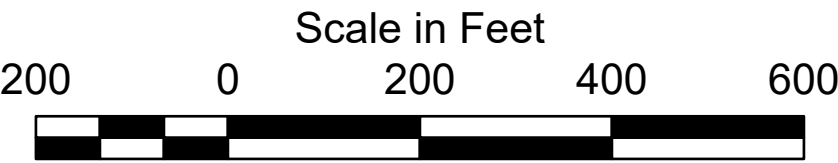
GEOID 18 AND NOAA TIDAL EPOCH: 1983 - 2001 WERE USED. SOUNDINGS ARE EXPRESSED IN FEET AND TENTHS AND REFER TO MEAN LOWER LOW WATER.

THE INFORMATION DEPICTED ON THIS MAP REPRESENT THE RESULTS OF SURVEYS MADE ON THE DATES INDICATED AND CAN ONLY BE CONSIDERED AS INDICATING THE GENERAL CONDITIONS EXISTING AT THAT TIME.

THE POSITIONS OF THE AIDS TO NAVIGATION ARE PROVIDED FOR INFORMATION ONLY, AND SHOULD NOT BE USED FOR NAVIGATION.

THE LIMITS OF THE FEDERAL CHANNEL DEPICT THE MOST CURRENT CHANNEL FRAMEWORK AVAILABLE WHICH CAN ALSO BE DOWNLOADED HERE: <http://navigation.usace.army.mil/Survey/Framework>

BASE MAPPING LINEWORK OR ORTHOPHOTOGRAPHY HAS BEEN COMPILED FROM A VARIETY OF SOURCES AND DATES AND IS INTENDED TO PORTRAY GENERAL CHARACTERISTICS OF THE SHORELINE AND OTHER FEATURES. TEMPORAL CHANGES MAY HAVE OCCURRED SINCE THIS DATA SET WAS COLLECTED AND SOME PARTS OF THE DATA MAY NO LONGER BE AN ACCURATE REPRESENTATION OF THE SURFACE CONDITIONS.



- Legend**
- Shoalest Sounding per Quarter
 - Centerline
 - Channel Framework
- | | |
|-----------|-------|
| 6 - 40 | 5 - 6 |
| 4 - 5 | 3 - 4 |
| 2 - 3 | 1 - 2 |
| -0.15 - 1 | |



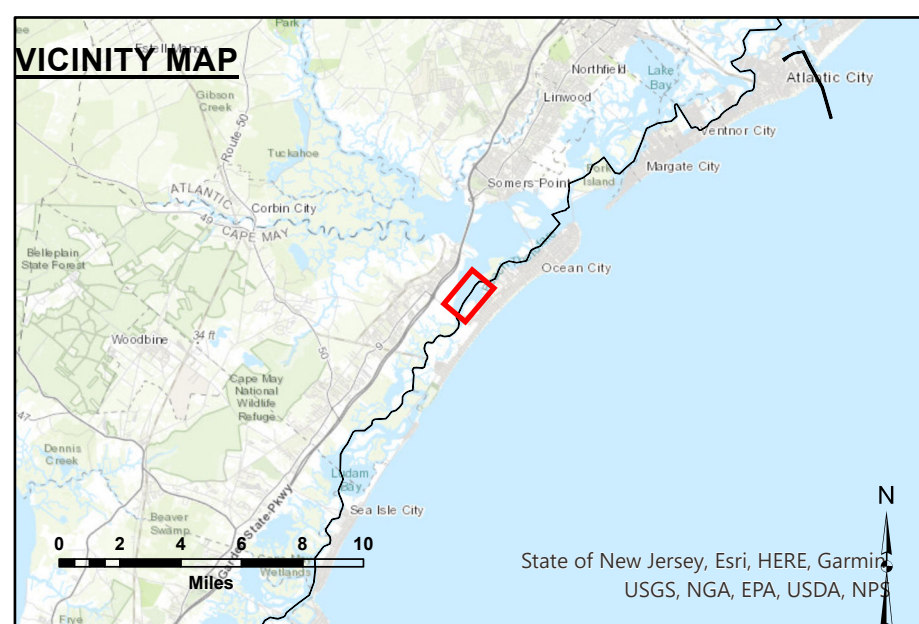
NKR #245 to MKR #253 - 23 JAN 25
NKR #253 to MKR #256 - 09 AUG 23
NKR #256 to MKR #270 - 04 JUN 24
NKR #270 to MKR #292 - 03 SEP 24

DISCLAIMER
This data is provided for general information only. It is not intended to be used in place of a hydrographic survey. The data is provided as a service to the public and is not intended to be used for navigation. The data is provided as a service to the public and is not intended to be used for navigation. The data is provided as a service to the public and is not intended to be used for navigation.

Surveyed By:	Checked By:
County No:	Field No:
Field No:	Checked By:
Approved:	Chief, Survey Station

NEW JERSEY INTRACOASTAL WATERWAY
IW 12 - MKR #245 to MKR #282
EXAMINATION

IW-44



THIS SURVEY MEETS STANDARDS AS OUTLINED IN CORPS OF ENGINEERS' HYDROGRAPHIC SURVEY MANUAL EM1110-2-1003, DATED NOVEMBER 30, 2013 FOR NAVIGATION AND DREDGING SUPPORT SURVEYS

HORIZONTAL REFERENCE - NAD 83, NEW JERSEY STATE PLANE, ZONE 2900, U.S. FOOT.

VERTICAL REFERENCE - MEAN LOWER LOW WATER, WHICH IS 2.27' BELOW N.A.V.D. 88.

GEOD 18 AND NOAA TIDAL EPOCH: 1983 - 2001 WERE USED. SOUNDINGS ARE EXPRESSED IN FEET AND TENTHS AND REFER TO MEAN LOWER LOW WATER.

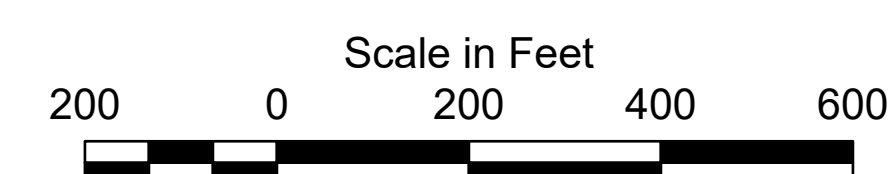
THE INFORMATION DEPICTED ON THIS MAP REPRESENT THE RESULTS OF SURVEYS MADE ON THE DATES INDICATED AND CAN ONLY BE CONSIDERED AS INDICATING THE GENERAL CONDITIONS EXISTING AT THAT TIME.

THE POSITIONS OF THE AIDS TO NAVIGATION ARE PROVIDED FOR INFORMATION ONLY, AND SHOULD NOT BE USED FOR NAVIGATION.

THE LIMITS OF THE FEDERAL CHANNEL DEPICT THE MOST CURRENT CHANNEL FRAMEWORK AVAILABLE WHICH CAN ALSO BE DOWNLOADED HERE:

<http://navigation.usace.army.mil/Survey/Framework>

BASE MAPPING LINEWORK OR ORTHOPHOTOGRAPHY HAS BEEN COMPILED FROM A VARIETY OF SOURCES AND DATES AND IS INTENDED TO PORTRAY GENERAL CHARACTERISTICS OF THE SHORELINE AND OTHER FEATURES. TEMPORAL CHANGES MAY HAVE OCCURRED SINCE THIS DATA SET WAS COLLECTED AND SOME PARTS OF THE DATA MAY NO LONGER BE AN ACCURATE REPRESENTATION OF THE SURFACE CONDITIONS.



Legend

- Shoalest Sounding per Quarter 6 - 40
- Centerline
- Channel Framework
- 5 - 6
- 4 - 5
- 3 - 4
- 2 - 3
- 1 - 2
- 0.15 - 1



MKR #245 to MKR #253 -- 23 JAN 25
 MKR #253 to MKR #258 -- 09 AUG 23
 MKR #258 to MKR #270 -- 04 JUN 24
 MKR #270 to MKR #282 -- 03 SEP 24

[illegible]

Drawing No.	Surveyed By:
Plot Scale:	Plotted By:
Approved: _____ Date of Approval: _____	E. Anthony Checked By:

NEW JERSEY INTRACOASTAL WATERWAY
IW 12 - MKR #245 to MKR #282

IW-44